

Quiz 7

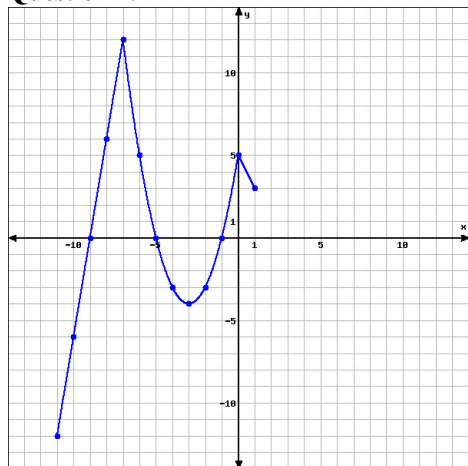
This quiz is graded out of 14 marks. No books, watches, notes or cell phones are allowed. You must show all your work, the correct answer is worth 1 mark the remaining marks are given for the work. If you need more space for your answer use the back of the page.

Question 1. (3 marks) Find x if the distance between $(x, 1)$ and $(2, 5)$ is $2\sqrt{10}$.

Question 2. (1 mark) Find the center of the circle given the 2 endpoints of a diameter: $(-8, 2)$ and $(2, 4)$

Question 3. (1 mark) Find the radius of the circle whose equation is: $(x - 3)^2 + y^2 = 20$

Question 4.



Given the graph of $y = f(x)$.

- (1 mark) State the domain of $f(x)$.
- (1 mark) State the range of $f(x)$.
- (1 mark) Determine $f(-6)$.
- (1 mark) Determine all x such that $f(x) = 0$.

Question 5. (5 marks) Given $f(x) = \frac{x}{x+1}$, simplify completely the following expression $\frac{f(x+h)-f(x)}{h}$.