

NAME: SOLUTIONS

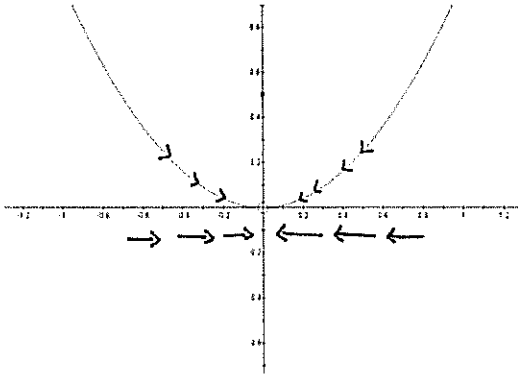
## QUIZ 1

Calculus 1 for Electrotech (201-NYA-DW 07)

Instructor: Emilie Richer

Date: January 20<sup>th</sup> 2010

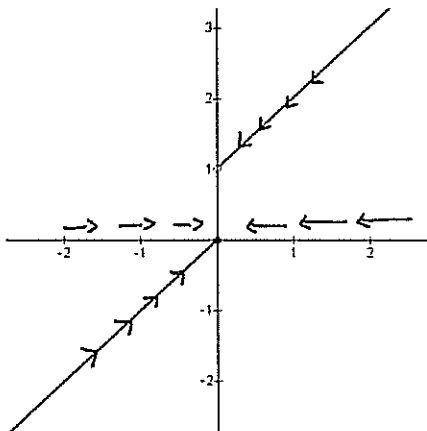
1 – As the  $x$  value approaches 0 what does the  $y$  value seem to approach?



AS  $x$  VALUES APPROACH 0  
 $y$  VALUES SEEM TO APPROACH 0  
AS WELL

2 – i) As the  $x$  value approaches 0 what do the  $y$  values seem to approach?

ii) Is there a difference in the  $y$  value if you approach  $x = 0$  from the left side or the right side?

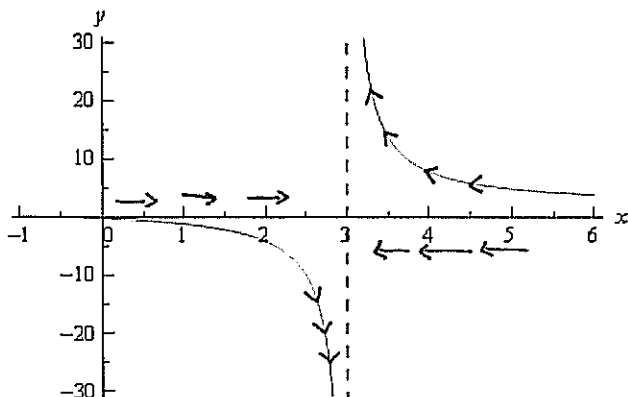


(i) 1 OR 0  
(ii) FROM LEFT 0  
FROM RIGHT 1

3 – i) As the  $x$  value approaches 3 what do the  $y$  values seem to approach?

ii) Are the  $y$  values approaching a fixed value or do they seem to be continuously changing?

iii) Is there a difference in the  $y$ -value if you approach  $x = 3$  from the left side or the right side?



(i) THEY SEEM TO BE  
"EXPLODING" TOWARDS  
 $\infty$  &  $-\infty$   
(ii) THEY ARE NOT APPROACHING  
A FIXED VALUE  
(iii) FROM LEFT  $y$  MOVES  
DOWNWARDS  
FROM RIGHT  $y$  MOVES  
UPWARDS