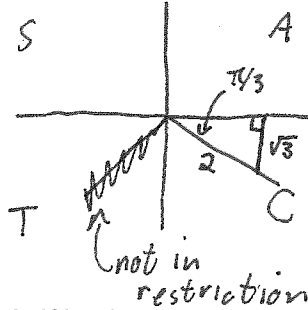


Quiz 4

This quiz is graded out of 10 marks. No books, calculators, notes or cell phones are allowed. You must show all your work, the correct answer is worth 1 mark the remaining marks are given for the work. If you need more space for your answer use the back of the page.

Question 1. (3 marks) Find the exact value of:

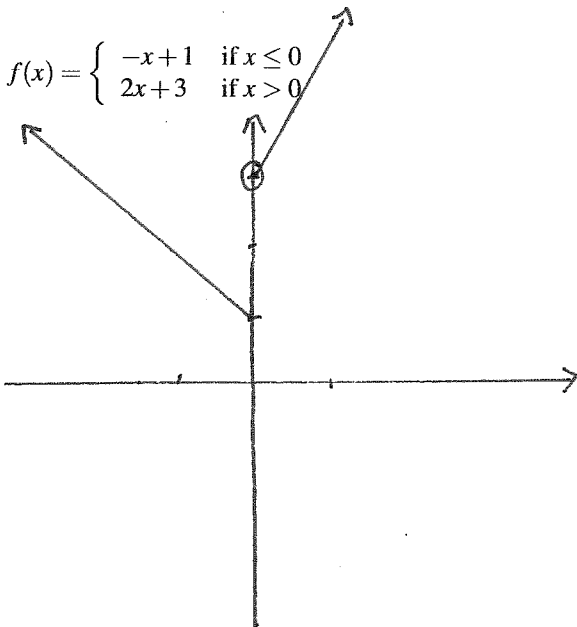
$$\begin{aligned} \arcsin\left(-\frac{\sqrt{3}}{2}\right) &= \theta = -\frac{\pi}{3} \\ \sin\left(\arcsin\left(-\frac{\sqrt{3}}{2}\right)\right) &= \sin\theta \\ \frac{\text{opp}}{\text{hyp}} &= \frac{-\sqrt{3}}{2} = \sin\theta \end{aligned}$$



Question 2. §2.4 #61 (3 marks) Find the indicated limit, if it exists

$$\begin{aligned} \lim_{x \rightarrow 1} \frac{x-1}{x^3+x^2-2x} &= \lim_{x \rightarrow 1} \frac{x-1}{x(x^2+x-2)} \\ \text{l.f. } \frac{0}{0} &= \lim_{x \rightarrow 1} \frac{\cancel{x-1}}{x(x+2)(\cancel{x-1})} \\ &= \lim_{x \rightarrow 1} \frac{1}{x(x+2)} \\ &= \frac{1}{1(1+2)} \\ &= \frac{1}{3} \end{aligned}$$

Question 3. §2.5 #38 (4 marks) Find the indicated one-sided limit, if it exists. $\lim_{x \rightarrow 0^+} f(x)$ and $\lim_{x \rightarrow 0^-} f(x)$, where



$$\begin{aligned} \lim_{x \rightarrow 0^+} f(x) &= \lim_{x \rightarrow 0^+} [2x + 3] = 3 \\ \lim_{x \rightarrow 0^-} f(x) &= \lim_{x \rightarrow 0^-} [-x + 1] = 1 \end{aligned}$$